

## ADDS 5300 Thin Client

### Linux or WinCE



### Benefits

Thin clients offer a secure, cost-effective alternative to PCs for networked computing.

#### Secure

Server-based computing reduces the risk of data theft, viruses and malware. All applications and data reside on centralized servers under system admin control.

#### Easy to maintain

Centrally manage and update all thin clients – simpler than managing individual user PCs.

#### Stable

With no fans or hard drives, Boundless thin clients offer years of quiet, reliable service.

#### Environmentally smart

Our thin clients use far less energy than PCs.

They are RoHS compliant, ship in biodegradable packing and can be returned to us for recycling.

The ADDS 5300 Thin Client is Boundless' entry-level fanless desktop, driven by a high-performance 500MHz AMD Geode III LX800 microprocessor. It supports VGA video and is a great choice for financial, Point of Sale, training applications and more.

The ADDS 5300 is an ideal thin client for server-based computing with RDP or ICA protocols, Windows terminal services or Linux Terminal Server Project. Embedded text terminal emulations enable access to UNIX, Pick and IBM host systems.

The ADDS 5300 is available with Linux or WinCE operating systems. All Boundless thin clients ship with the Citrix ICA client and the Ericom PowerTerm WebConnect remote desktop client; the affordable alternative to Citrix for presentation virtualization and desktop virtualization.

The ADDS 5300 has four external USB 2.0 ports and one serial port connection, supports internal USB 2.0 wireless modules and is compatible with IEEE802.11 b/g wireless connections. Its one parallel port (DB25F) is bi-directional Centronics-compatible and locally printable.

### Economical thin client

- Fanless, low energy use
- Linux or WinCE
- AMD Geode LX800 processor
- Linux or WinCE
- Supports RDP, ICA, Windows Terminal Services and Linux Terminal Server Project
- Compact 40 x 140 x 190 mm

### Simple, Secure and Stable

The ADDS 5300 is easy to install and use. The stylish compact cabinet requires very little desk top space, or easily mounts to a wall, shelf or flat panel monitor using the optional VESA mounting bracket. VNC tools and optional Remote Management software control all clients.

### Made to order in the USA

Boundless thin clients and text terminals are made to order in our manufacturing center in western New York.

## ADDOS 5300 Hardware Specifications

<b>Processor</b>	AMD Geode GX III LX800, 500MHz, Fanless
<b>South Bridge</b>	AMD CS5536
<b>System Memory</b>	128Mb DDR memory (One DDR SO-DIMM 200 Pins, Expandable to 1GB)
<b>Flash</b>	64Mb flash memory (Type-II Socket, Compact Flash Card, Expandable to 4GB)
<b>IDE Interface</b>	One 2 X 20 54mm Box Header to Support ATA-33/66/100/133 IDE Device (2.5" HDD support)
<b>Display (VGA )</b>	Analog VGA video output, DB-15 connector 1920 X 1440 24-bit true color, 85Hz 1600 X 1200 24-bit true color, 85Hz 1280 X 1024 24-bit true color, up to 85Hz 1024 X 768 24-bit true color, up to 85Hz 800 X 600 24-bit true color, up to 85 Hz 640 X 480 24-bit true color, up to 85 Hz
<b>Video Memory</b>	Shared System Memory, from 8MB to 64MB
<b>BIOS</b>	Award Plug and Play BIOS—4MB Flash ROM
<b>Audio</b>	Output: GCODEC VT1612A, Full 16 Bit Stereo FM Synthesis Input: 1/8 inch 8 bit mini microphone
<b>Serial Port</b>	One D-Sub 9 pin Connector for RS232
<b>Parallel Port</b>	One D-Sub 25 Pin Connector, bi-directional Centronics compatible to support SPP/EPP/ACP mode. The parallel port is located on the side of the unit and hidden behind an easily accessible cover.
<b>Keyboard and Mouse</b>	PS2 Mini-Din Connectors (Keyboard and Mouse optional)
<b>USB Support</b>	Four External USB 2.0 Ports (Two in front and two in rear)
<b>Ethernet</b>	10/100 Ethernet (RJ45 Connector)
<b>System Power</b>	DC +5V/30W (External Power)
<b>Dimensions</b>	Height 40mm, Width 190mm, Depth 140mm
<b>Net Weight</b>	0.7 kg (1.54 lbs)
<b>Regulatory</b>	UL, CUL, CE, FCC

### Options

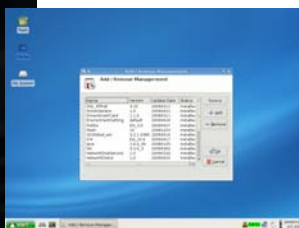
Mouse, PC104 US Keyboard  
VESA metal mounting bracket  
Management Software

*We are constantly enhancing our products; specifications are subject to change at any time.*

## ADDOS 5300 Software Specifications

### Linux

- Citrix ICA Client
- Remote Desktop Connection
- Browser: Firefox
- Browser Plug-In: Adobe Flash Player
- Ericom WebConnect Agent
- X11 (XDMCP): X Window System
- Terminal Emulations: IBM/ASCII, ANSI
- VNC Viewer
- USB Devices Supported: CDROM, Flash Drive, Printer
- Printer Support (Parallel Port)
- Thin Print Support
- File Sharing: Samba, NFS
- Linux Image Update Function: Support FTP
- Font Server: X11 Font Server
- Port Redirect: TCP/IP COM, LPT1
- Enhanced Write Filter (EWF)
- Enhanced Add/Remove Component Manager



Boundless Linux thin client desktop

### WinCE.net

- Citrix ICA Client
- Remote Desktop Connection
- Browser: Internet Explorer
- Media Player
- Ericom WebConnect Agent
- Terminal Emulations: IBM/ASCII, ANSI
- JScript
- VBScript
- LPD (supports printer search, set printer detected in LPD list)
- RM Agent (Authorization, file clone, updates, etc.)
- Thin Print Support
- USB Manager (set storage device, read/write access control)
- User Security Control: System manager can set access control (user mode/admin mode)
- FTP Updates
- Add/Remove Component (user-installed application or drivers)
- Ping Test
- System Info (Component page lists version of each component, displays firmware name)
- VNC Viewer/Server (The VNC Server in CE 6.0 allows user to change the port number)
- Hot Key Support (CE 6.0 supports additional Hot Keys)
- USB storage devices supported: USB Floppy, USB CDROM, USB Flash drive, USB Printer
- Printer support: COM/LPT/USB
- Background and appearance change
- Auto Startup Function
- Wakeup on LAN

*We are constantly enhancing our products; specifications are subject to change at any time.*

## ADDS 5300 Thin Client

### Terminal Emulations Supported

Terminal emulations allow you to access legacy Unix, Pick and IBM host systems. If you need additional terminal emulations, please see the ADDS 6300 or ADDS 6700 thin clients, which support additional emulations with Ericom terminal emulation software.

- ANSI       SCO Console ANSI, BBS ANSI
- ADDS       ADDS VP 2A
- DEC        VT-52, VT-100, VT-220, VT-320, VT-420
- IBM        IBM 3270, IBM 5250
- WYSE       WY-50+, WY-60, WY-120, WY-325
- TeleVideo   TVI 925, TVI 910

### Hosts Supported

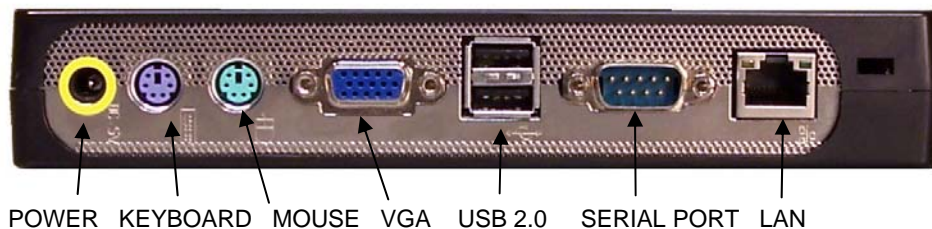
IBM Mainframe (zSeries), IBM AS/400 (iSeries), Unix, Linux, OpenVMS, Data General, SCO, Tandem (NSK), HP-3000 and more.

### Communication Modes

TN3270/TN3270E (RFC 1646 and 1647), TN5250/TN5250E (with device name support), Microsoft SNA server, Novell Netware for SAA, APPC (NS- router for 5250), Telnet, Serial Modem, Direct COM Port, Pathworks LAT, Super LAT, PPP/Slip, TCP/IP, TAPI.

### Rear Ports

Hidden DB25 Parallel Port Connector is located on side of unit.



*We are constantly enhancing our products; specifications are subject to change at any time.*

8-4-2010