

ADDOS 6300 Thin Client

Linux, WinCE or XPe



Benefits

Thin clients offer a secure, cost-effective alternative to PCs for networked computing.

Secure

Server-based computing reduces the risk of data theft, viruses and malware. All applications and data reside on centralized servers under system admin control.

Easy to maintain

Centrally manage and update all thin clients – simpler than managing individual user PCs.

Stable

With no fans or hard drives, Boundless thin clients offer years of quiet, reliable service.

Environmentally smart

Our thin clients use far less energy than PCs.

They are RoHS compliant, ship in biodegradable packing and can be returned to us for recycling.

The ADDOS 6300 Thin Client is a high-performance fanless desktop driven by the powerful 500MHz AMD Geode III LX800 processor. With 512Mb DDR memory (expandable to 1Gb) and 256 or 512Mb flash memory (expandable to 4Gb) it has plenty of power for a wide range of applications.

The ADDOS 6300 is an ideal thin client for server-based computing with RDP or ICA protocols, Windows terminal services or Linux Terminal Server Project. Embedded text terminal emulations enable access to UNIX, Pick and IBM host systems.

The ADDOS 6300 is available with Linux, WinCE or XPe operating systems. All Boundless thin clients ship with the Citrix ICA client and the Ericom PowerTerm WebConnect remote desktop client; the affordable alternative to Citrix for presentation virtualization and desktop virtualization.

The ADDOS 6300 has two external USB 2.0 ports and two serial ports. An optional parallel port is bi-directional Centronics-compatible. It supports internal USB 2.0 wireless modules and is compatible with IEEE802.11 b/g wireless connections.

Powerful, expandable thin client

- Fanless, low energy use
- Expandable and customizable
- Linux, WinCE or XPe
- AMD Geode LX800 processor
- 512Mb DDR, 256/512Mb flash memory (expandable)
- Supports RDP, ICA, Linux Terminal Sever Project and Windows Terminal Services
- Compact 57 x 250 x 232 mm

Customizable and made to order in the USA

The ADDOS 6300 is customizable to meet your needs: increased connectivity, unique video requirements, special software configurations, enclosures and more. We will gladly add your logos, labels, asset tags and splash screens.

The ADDOS 6300 is easy to install and use. The compact cabinet requires very little desk top space or easily mounts to a wall, shelf or flat panel monitor using the optional VESA mounting bracket.

Boundless thin clients and text terminals are made to order in our manufacturing center in western New York.

ADDOS 6300 Hardware Specifications

Processor	AMD Geode GX III LX800, 500MHz, Fanless
South Bridge	AMD CS5536
System Memory	512Mb DDR memory (One DDR SO-DIMM 200 Pins, Expandable to 1GB)
Flash	256Mb or 512Mb flash memory (Type-II Socket, Compact Flash Card, Expandable to 4GB)
IDE Interface	One 2 X 20 54mm Box Header to Support ATA-33/66/100/133 IDE Device (2.5" HDD support)
Display (VGA)	Analog VGA video output, DB-15 connector 1920 X 1440 24-bit true color, 85Hz 1600 X 1200 24-bit true color, 85Hz 1280 X 1024 24-bit true color, up to 85Hz 1024 X 768 24-bit true color, up to 85Hz 800 X 600 24-bit true color, up to 85 Hz 640 X 480 24-bit true color, up to 85 Hz
Video Memory	Shared System Memory, from 8MB to 64MB
BIOS	Award Plug and Play BIOS—4MB Flash ROM
Audio	Output: GCODEC VT1612A, Full 16 Bit Stereo FM Synthesis Input: 1/8 inch 8 bit mini microphone
Serial Ports	Two D-Sub 9 pin Connectors for RS232
Parallel Port	See options below
Keyboard and Mouse	PS2 Mini-Din Connectors (Keyboard and Mouse optional)
USB Support	Two external USB 2.0 ports, one internal USB port
Ethernet	10/100 Ethernet (RJ45 Connector)
System Power	DC +5V/30W (External Power)
Dimensions	Height 57mm, Width 250mm, Depth 232mm
Net Weight	2.49 kgs (5.5 lbs)
Regulatory	UL, CUL, CE, FCC

Options

Mouse, PC104 US Keyboard
VESA metal mounting bracket
802.11 Wireless

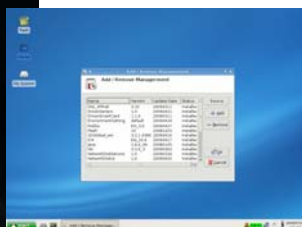
Optional Parallel Port: One D-Sub 25 Pin Connector, bi-directional Centronics compatible to support SPP/EPP/ACP mode.

Boundless is constantly working to add features and options; specifications are subject to change at any time.

ADDOS 6300 Software Specifications

Linux

- Citrix ICA Client
- Remote Desktop Connection
- Browser: Firefox
- Browser Plug-In: Adobe Flash Player
- Browser Plug-In: Adobe Acrobat PDF
- Browser Plug-In: Java
- Browser Plug-In: RealPlayer
- Ericom WebConnect Agent
- X11 (XDMCP): X Window System
- Terminal Emulations: IBM/ASCII, ANSI (Ericom emulations optional)



Boundless Linux thin client desktop

- VNC Viewer
- NX Client
- SSH Client
- RSH
- Telnet
- Tarantella
- Enhanced Add/Remove component manager
- Enhanced Write Filter (EWF)
- USB Devices Supported: CDROM, Flash Drive, Printer
- Printer Support (Parallel Port)
- Thin Print Support
- File Sharing: Samba, NFS
- Linux Image Update Function: Support FTP
- Font Server: X11 Font Server
- Port Redirect: TCP/IP COM, LPT1

Options

- Go-Global client
- VPN
- Open Office
- Ericom Terminal emulations (see last page)
- Wireless LAN card

WinCE.net

- Citrix ICA Client
- Remote Desktop Connection
- Browser: Internet Explorer
- Media Player
- Ericom WebConnect Agent
- Terminal Emulations: IBM/ASCII, ANSI (Ericom emulations optional)
- JScript
- VBScript
- LPD (supports printer search, set printer detected in LPD list)
- RM Agent (Authorization, file clone, updates, etc.)
- Thin Print Support
- USB Manager (set USB storage device, read/write access control)
- User Security Control: System manager can set access control (user mode/admin mode)
- FTP Updates
- Add/Remove Component (user-installed application or drivers)
- Ping Test
- System Info (Component page lists version of each component, displays firmware name)
- VNC Viewer/Server (The VNC Server in CE 6.0 allows user to change the port number)
- Hot Key Support (CE 6.0 supports additional Hot Keys)
- USB devices supported: USB Floppy, CDROM, Flash drive, Printer
- Background and appearance change
- Auto Startup Function
- Wakeup on LAN

Options

- Printer support: COM/LPT/USB
- Go-Global client
- Ericom Terminal emulations (see last page)
- Wireless LAN card

We are constantly adding features and options; specifications are subject to change at any time. Some features require OS or middleware support.

ADDOS 6300 Software Specifications *(continued)*

XPe service pack 2

256 Mb standard image

- Citrix ICA Client
- Remote Desktop Connection
- Browser: Internet Explorer
- Browser Plugin: Java
- Browser Plugin: Adobe Flash Player
- Media Player
- Ericom WebConnect Agent
- VNC Server
- Registry Editor
- MSXML
- JScript
- VBScript
- Company Profile: Add third page for component info
- DUA (Device Update Agent) DUAUI
- TCP/IP Utilities (Ping, IPconfig, etc.)
- Enhanced Write Filter: EWF Switch Tray (password protect and commit for EWF)
- Modem Support: standard modem
- USB device support: USB Floppy, CDROM, Flash drive, Printer, USB Audio device
- Printer Support (parallel port)
- Map Network storage
- Desktop QFE support
- Task Scheduler
- New RM Agent for RM6
- EWF Registry Filter
- Detecting memory overflow for EWF
- XPe image update function
- Microsoft Vector Graphics Rendering (VML)
- Fix Daylight Saving Time
- Enable Hibernate-Once-Resume-Many mode (HORM): EWF provides improved management of HORM
- Safe Mode Support

Standard Image Options

- Wireless LAN card

We are constantly adding features and options; specifications are subject to change at any time. Some features require OS or middleware support.

XPe service pack 2

512 Mb expanded image

The expanded image includes all standard image items plus:

- Direct X
- Windows Firewall
- Internet connection firewall utility
- Windows Installer (Full) - Microsoft Data Access Components, Jet Database Engine
- Web Camera Support (Logitech QuickCam Express, Logitech USB Camera)
- Windows Accessories (WordPad, Calc, Notepad, MS paint)
- Network Printer (Standard TCP/IP port)
- Audio Support for MSN
- Scanner support
- Support all fonts for English
- XP Visual style
- File Sharing
- Screen Savers
- Add all Class Installer Component

Expanded Image Options

- Wireless LAN card
- NetMeeting
- MSN
- Microsoft Office Viewers
- Acrobat Viewers
- Ericom Terminal Emulations

ADDS 6300 Thin Client

Terminal Emulations

Embedded terminal emulations allow you to access legacy Unix, Pick and IBM host systems.

Standard

- ANSI SCO Console ANSI, BBS ANSI
- ADDS ADDS VP 2A
- DEC VT-52, VT-100, VT-220, VT-320, VT-420
- IBM IBM 3270, IBM 5250
- WYSE WY-50+, WY-60, WY-120, WY-325
- TeleVideo TVI 925, TVI 910

Optional Ericom PowerTerm terminal emulation set

- ANSI BBS-ANSI, SCO-ANSI, AT386, AIX Term, Linux, XTERM, WY370
- ADDS ADDS VP A2
- DEC VT52, VT100, VT220, VT320, VT420, VT510, VT520, VT525
- IBM 3270 (TN3270E), 5250 (TN5250), 3151
- WYSE Wyse (50/50+/60)
- TeleVideo TVI 910+/920/925/950/955
- Others HZ1500, Data General D-412, Siemens 97801, HP 700, Tandem 65

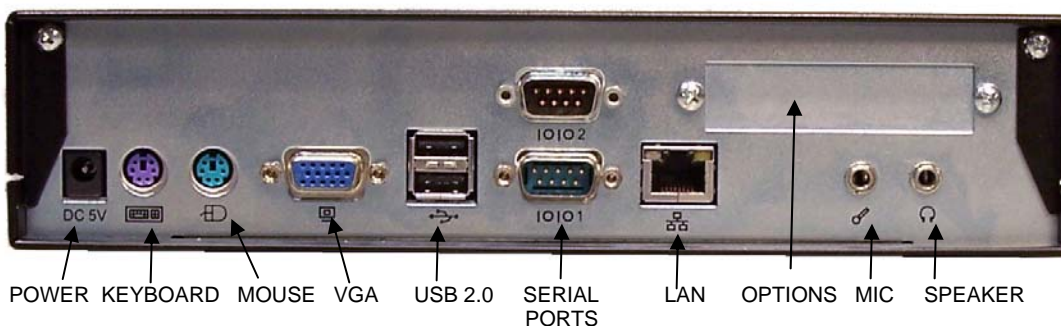
Hosts Supported

IBM Mainframe (zSeries), IBM AS/400 (iSeries), Unix, Linux, OpenVMS, Data General, SCO, Tandem (NSK), HP-3000 and more.

Communication Modes

TN3270/TN3270E (RFC 1646 and 1647), TN5250/TN5250E (with device name support), Microsoft SNA server, Novell Netware for SAA, APPC (NS- router for 5250), Telnet, Serial, Modem, Direct COM Port, Pathworks LAT, Super LAT, PPP/Slip, TCP/IP, TAPI.

ADDS 6300 Rear Ports



We are constantly adding features and options; specifications are subject to change at any time.

9-18-2009