

ADDOS 6700 Thin Client

Linux, WinCE or XPe



Benefits

Thin clients offer a secure, cost-effective alternative to PCs for networked computing.

Secure

Server-based computing reduces the risk of data theft, viruses and malware. All applications and data reside on centralized servers under system admin control.

Easy to maintain

Centrally manage and update all thin clients – simpler than managing individual user PCs.

Stable

With no fans or hard drives, Boundless thin clients offer years of quiet, reliable service.

Environmentally smart

Our thin clients use far less energy than PCs.

They are RoHS compliant, ship in biodegradable packing and can be returned to us for recycling.

The ADDOS 6700 is our highest-performance thin client, driven by the VIA Eden V4 1.2GHz processor in a compact, fanless desktop design. Dual video outputs, 512Mb DDR2 memory (expandable to 1Gb) and 256 or 512Mb flash memory (expandable to 4Gb) power a wide range of server-based computing applications in government, industrial, medical, retail and other settings.

The ADDOS 6700 is an ideal for server-based computing with RDP, ICA, Windows terminal services or Linux Terminal Server Project. Embedded text terminal emulations enable access to UNIX, Pick and IBM host systems.

The ADDOS 6700 is available with Linux, WinCE or XPe operating systems. All Boundless thin clients ship with the Citrix ICA client and the Ericom PowerTerm WebConnect remote desktop client; the affordable alternative to Citrix.

The ADDOS 6700 has multiple communication ports including serial and USB, "bump bar" support for point of service applications, up to three video outputs and 10/100/1000 high speed LAN connectivity. It supports internal USB 2.0 wireless modules and is compatible with IEEE802.11 b/g wireless connections.

Highest-performance ADDS thin client

- Fanless – low energy use
- Expandable and customizable
- Linux, WinCE or XPe
- VIA Eden V4 1.2GHz processor
- 512Mb DDR2, 256/512Mb flash memory (expandable)
- VGA and DVI dual screen video
- Supports RDP, ICA Windows Terminal Services and Linux Terminal Server Project
- Compact 57 x 250 x 232 mm

Customizable and made to order in the USA

The ADDOS 6700 is customizable to meet your needs: increased connectivity, unique video requirements, special software configurations and more. We will gladly add your logos, labels, asset tags and splash screens.

The ADDOS 6300 is easy to install and use. The compact cabinet requires very little desk top space or easily mounts with the optional VESA mounting bracket.

Boundless thin clients and text terminals are made to order in our manufacturing center in western New York.

ADDS 6700 Hardware Specifications

Processor	VIA Eden V4 1.2GHz Processor, Fanless
South Bridge	VIA CN700, VT8237R+
System Memory	512 Mb DDR2 memory (One 240 Pin DIMM Socket, Supports DDR2 533/667, expandable to 1GB)
Flash	256 or 512Mb flash memory (Type-II Socket, Compact Flash Card, Expandable to 4GB)
IDE Interface	One 2 X 20 54mm Box Header to Support ATA-33/66/100/133 IDE Device (2.5" HDD support)
Display (VGA)	VGA and DVI both supported (Dual Screen) up to 1600 X 1200 video resolution on VGA port (DB-15) up to 1280 X 1024 Video Resolution on DVI Port (DVI-D) 31-bit to High Color
Video Memory	Shared with main DDR2-DRAM, from 8MB to 64MB
BIOS	Award Plug and Play BIOS—4MB Flash ROM
Audio	AC-97 2.0 CODEC Compatible, Full 16 Bit Stereo FM Synthesis
Audio Port	Mic-in, Line-in, Line-out
Expansion	One on-board PCI slot
Serial ATA Ports	Two SATA (Serial ATA) ports
Serial Ports	Two D-Sub 9 pin Connectors for RS232
Parallel Port	One D-Sub 25 Pin Connector, Bi-Directional Centronics compatible to support SPP/EPP/ACP mode
Keyboard and Mouse	PS2 Mini-Din Connectors (Keyboard and Mouse optional)
USB Support	Four external USB 2.0 ports, two internal USB ports
Ethernet	10/100/1000 Ethernet (RJ45 Connector)
System Power	DC +12V/5A (External Power)
Dimensions	Height 57mm, Width 250mm, Depth 232mm
Net Weight	2.49 kgs (5.5 lbs)
Regulatory	UL, CUL, CE, FCC

Options

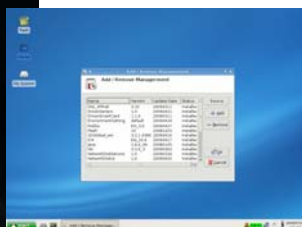
Mouse, PC104 US Keyboard
 VESA metal mounting bracket
 Twist-lock power cord
 802.11 Wireless

We are constantly adding features and options; specifications are subject to change at any time.

ADDOS 6700 Software Specifications

Linux

- Citrix ICA Client
- Remote Desktop Connection
- Browser: Firefox
- Browser Plug-In: Adobe Flash Player
- Browser Plug-In: Adobe Acrobat PDF
- Browser Plug-In: Java
- Browser Plug-In: RealPlayer
- Ericom WebConnect Agent
- X11 (XDMCP): X Window System
- Terminal Emulations: IBM/ASCII, ANSI (Ericom emulations optional)



Boundless Linux thin client desktop

- VNC Viewer
- NX Client
- SSH Client
- RSH
- Telnet
- Tarantella
- Enhanced Add/Remove component manager
- Enhanced Write Filter (EWF)
- USB Devices Supported: CDROM, Flash Drive, Printer
- Printer Support (Parallel Port)
- Thin Print Support
- File Sharing: Samba, NFS
- Linux Image Update Function: Support FTP
- Font Server: X11 Font Server
- Port Redirect: TCP/IP COM, LPT1

Options

- Go-Global client
- Skype
- VPN
- Open Office
- Ericom Terminal emulations (see last page)
- Wireless LAN card

WinCE.net

- Citrix ICA Client
- Remote Desktop Connection
- Browser: Internet Explorer
- Media Player
- Ericom WebConnect Agent
- Terminal Emulations: IBM/ASCII, ANSI (Ericom emulations optional)
- JScript
- VBScript
- LPD (supports printer search, set printer detected in LPD list)
- RM Agent (Authorization, file clone, updates, etc.)
- Thin Print Support
- USB Manager (set USB storage device, read/write access control)
- User Security Control: System manager can set access control (user mode/admin mode)
- FTP Updates
- Add/Remove Component (user-installed application or drivers)
- Ping Test
- System Info (Component page lists version of each component, displays firmware name)
- VNC Viewer/Server (The VNC Server in CE 6.0 allows user to change the port number)
- Hot Key Support (CE 6.0 supports additional Hot Keys)
- USB devices supported: USB Floppy, CDROM, Flash drive, Printer
- Background and appearance change
- Auto Startup Function
- Wakeup on LAN

Options

- Printer support: COM/LPT/USB
- Go-Global client
- Ericom Terminal emulations (see last page)
- Wireless LAN card

We are constantly adding features and options; specifications are subject to change at any time. Some features require OS or middleware support.

ADDOS 6700 Software Specifications (continued)

XPe service pack 2 256 Mb standard image

- Citrix ICA Client
- Remote Desktop Connection
- Browser: Internet Explorer
- Browser Plugin: Java
- Browser Plugin: Adobe Flash Player
- Media Player
- Ericom WebConnect Agent
- VNC Server
- Registry Editor
- MSXML
- JScript
- VBScript
- Company Profile: Add third page for component info
- DUA (Device Update Agent) DUAUI
- TCP/IP Utilities (Ping, IPconfig, etc.)
- Enhance Write Filter: EWF Switch Tray (password protect and commit for EWF)
- Modem Support: standard modem
- USB device support: USB Floppy, CDROM, Flash drive, Printer, USB Audio device
- Printer Support (parallel port)
- Map Network storage
- Desktop QFE support
- Task Scheduler
- New RM Agent for RM6
- EWF Registry Filter
- Detecting memory overflow for EWF
- XPe image update function
- Microsoft Vector Graphics Rendering (VML)
- Fix Daylight Saving Time
- Enable Hibernate-Once-Resume-Many mode (HORM): EWF provides improved management of HORM
- Safe Mode Support

Standard Image Options

- Wireless LAN card
- Ericom Terminal Emulations

XPe service pack 2 512 Mb expanded image

The expanded image includes all standard image items plus:

- Direct X
- Windows Firewall
- Internet connection firewall utility
- Windows Installer (Full) - Microsoft Data Access Components, Jet Database Engine
- Web Camera Support (Logitech QuickCam Express, Logitech USB Camera)
- Windows Accessories (WordPad, Calc, Notepad, MS paint)
- Network Printer (Standard TCP/IP port)
- Audio Support for MSN
- Scanner support
- Support all fonts for English
- XP Visual style
- USB video device support
- File Sharing
- Screen Savers
- Add all Class Installer Component

Expanded Image Options

- Wireless LAN card
- NetMeeting
- MSN
- Microsoft Office Viewers
- Acrobat Viewers
- Ericom Terminal Emulations
- Additional VGA

We are constantly adding features and options; specifications are subject to change at any time. Some features require OS or middleware support.

ADDS 6700 Thin Client

Terminal Emulations

Embedded terminal emulations allow you to access legacy Unix, Pick and IBM host systems.

Standard

- ANSI SCO Console ANSI, BBS ANSI
- ADDS ADDS VP 2A
- DEC VT-52, VT-100, VT-220, VT-320, VT-420
- IBM IBM 3270, IBM 5250
- WYSE WY-50+, WY-60, WY-120, WY-325
- TeleVideo TVI 925, TVI 910

Optional Ericom PowerTerm terminal emulation set

- ANSI BBS-ANSI, SCO-ANSI, AT386, AIX Term, Linux, XTERM, WY370
- ADDS ADDS VP A2
- DEC VT52, VT100, VT220, VT320, VT420, VT510, VT520, VT525
- IBM 3270 (TN3270E), 5250 (TN5250), 3151
- WYSE Wyse (50/50+/60)
- TeleVideo TVI 910+/920/925/950/955
- Others HZ1500, Data General D-412, Siemens 97801, HP 700, Tandem 653

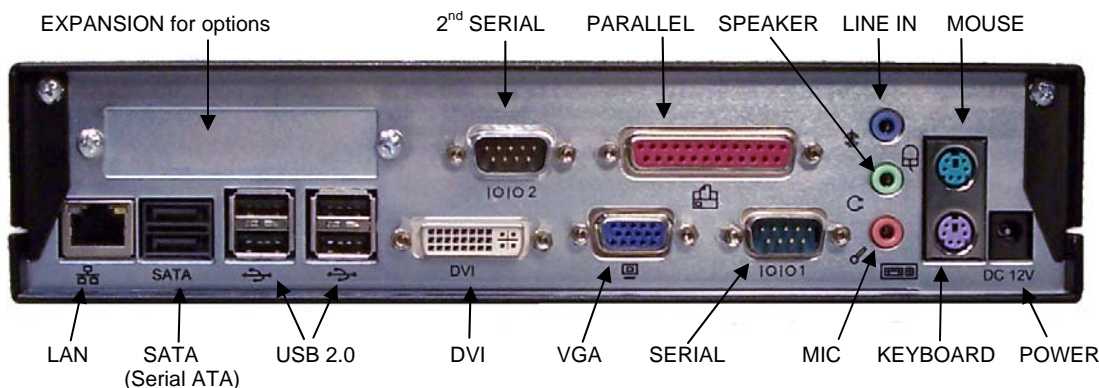
Hosts Supported

IBM Mainframe (zSeries), IBM AS/400 (iSeries), Unix, Linux, OpenVMS, Data General, SCO, Tandem (NSK), HP-3000 and more.

Communication Modes

TN3270/TN3270E (RFC 1646 and 1647), TN5250/TN5250E (with device name support), Microsoft SNA server, Novell Netware for SAA, APPC (NS- router for 5250), Telnet, Serial, Modem, Direct COM Port, Pathworks LAT, Super LAT, PPP/Slip, TCP/IP, TAPI.

ADDS 6700 Rear Ports



We are constantly adding features and options; specifications are subject to change at any time. Some features require OS or middleware support.

9-18-2009